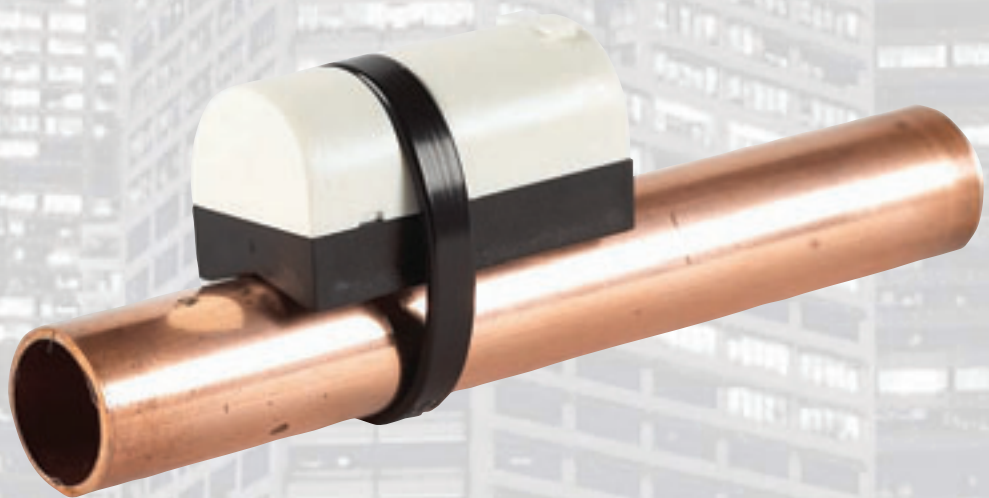


QwikSTRAP™

Strap-On Temperature Sensor

Features:

- Rugged injection-molded enclosure with Qwik Snap Cover
- Small compact design
- Spring loaded contact surface
- Patent Pending Qwik Connect System eliminates wire nuts
- NTC thermistors and RTD elements available
- Compatible with any Control System
- Optional 1/2" NPT conduit adapter
- CE & RoHS compliant
- 5 Year Limited Warranty
- Assembled in USA

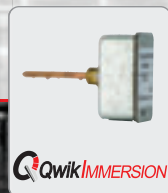


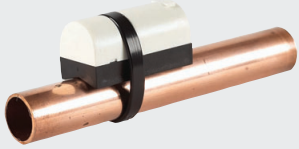
Description:

High quality, Pipe Mounted Strap-On Temperature Sensor in injection-molded plastic enclosure provides a cost-effective solution as an alternative for traditional immersion sensors in both commercial and industrial applications.

Available measuring elements interface with all major control manufacturers. Accurate interchangeable thermistors and RTD's ensure low drift and are double encapsulated to guarantee the highest reliability.

The spring-loaded contact surface adjusts automatically to different pipe sizes and uneven surfaces. The Qwik Snap Cover and patent pending Qwik Connect System make installation easy and reduce installation costs.

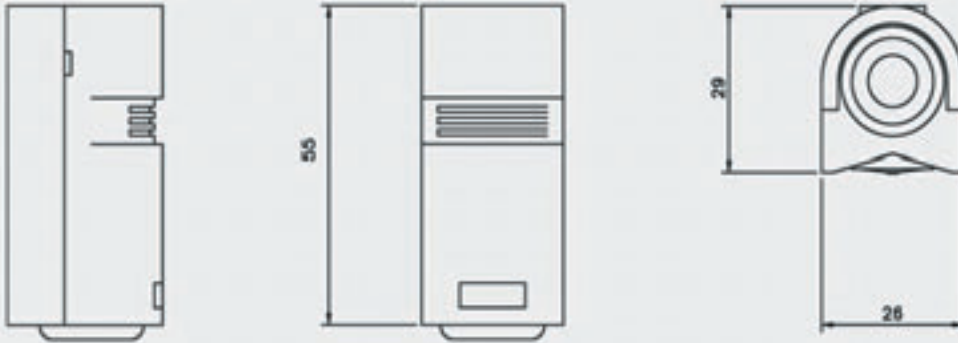




Specifications:

- Enclosure:** IP54, injection-molded polycarbonate
Cover: Qwik Snap, injection-molded polycarbonate
Mounting: Heat-resistant strap included for up to 3 1/2" diameter pipe
- Connection:** 2-pole AWG 22-16 / 0.35 - 1.5mm² spring-loaded, Patent Pending Qwik Connect System
- Sensor Element:** Interchangeable NTC thermistor, 2-wire
RTD Pt1000, 2-wire
- Sensor Value:** NTC 10KOhm type 2 @ 25°C / 77°F
NTC 10KOhm type 3 @ 25°C / 77°F
NTC 20KOhm @ 25°C / 77°F
NTC 3KOhm @ 25°C / 77°F
RTD Pt1000 10000hm @ 0°C / 32°F
(Other elements on request)
- Accuracy:** NTC thermistor 0...70°C ± 0.2°C / 32...158°F ± 0.36°F
Pt1000 Class B IEC751, ± 0.3°C / ± 0.5°F @ 0°C / 32°F
- Range:** 0...90°C / -4...194°F
- Approval:** CE & RoHS compliant
Warranty: 5 year limited warranty
- Accessories:** 1/2" NPT conduit adapter
Strap for pipes larger than 3 1/2" diameter

Dimensions (in mm)



- | | |
|---------------|---------------------------|
| Part # | NTC 10K type 2 |
| THSA000 | Qwik Strap NTC 10K type 2 |
| | NTC 10K type 3 |
| THSB000 | Qwik Strap NTC 10K type 3 |
| | NTC 20K |
| THSC000 | Qwik Strap NTC 20K |
| | NTC 3K |
| THSD000 | Qwik Strap NTC 3K |
| | Pt1000/B |
| THSE000 | Qwik Strap Pt1000 |

TASSERONTM
SENSORS & CONTROLS