

**INSTALLATION INSTRUCTIONS**

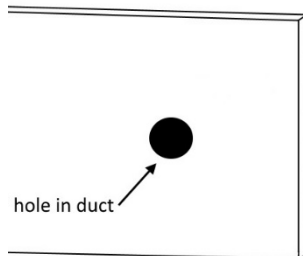
**SAFE BOX HANDLING NOTES – PLEASE READ FIRST**

**To Open:** 1. Depress bottom latch with a slotted screwdriver and lid will pop out. 2. Pull top of lid straight out from housing without lifting up. 3. Once entirely pulled out, lift lid and it will remain in open position until closed.

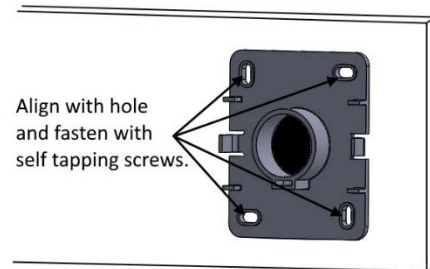
**To Close:** 1. Push lid down without latching bottom. 2. Push in top hinges until it snaps into place. 3. Close bottom until it latches. 4. Optional screw provided to more permanently secure lid to housing.



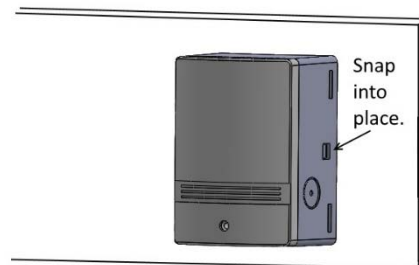
**Step 1** – Drill 1/4” hole in desired location in duct.



**Step 2** – Align opening in mounting flange with hole in duct and attach mounting flange to duct using self-tapping screws.

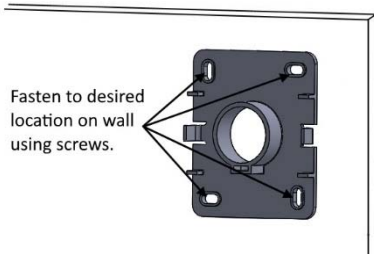


**Step 3** - Insert sensor probe in mounting flange and push until sensor snaps into place. Wire through provided bottom or side access points. Additional snap-in conduit adapters available if necessary. Proceed to Configuration Instructions.

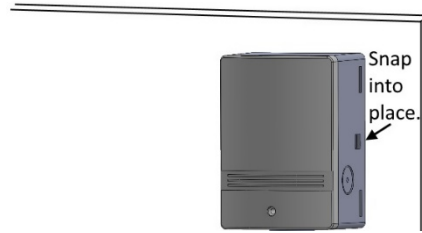




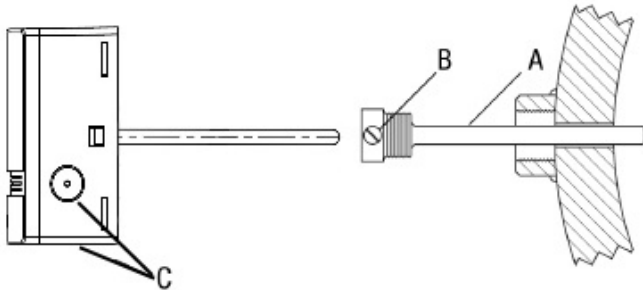
**Step 1** – Determine mounting location (north side of building if possible). Attach the mounting flange to building.



**Step 2** - Snap sensor onto mounting flange.



**Step 3** – If wiring through side access points, pierce grommet with knife to feed wire through. Bottom access point has rubber grommet pre-installed, but can be removed easily for ½” NPT conduit connection.



**Step 1** – Insert thermal well (A) into pipe nipple using Teflon tape or pipe dope. Tighten securely, do not over tighten.

**Step 2** – Inject Tasseron Thermal Paste into well.

**Step 3** – Insert Temperature probe into thermal well. Tighten Set Screw in head of thermal well until it is snug against the probe (B). Do not over tighten.

**Step 4** – Run control wires through the cable inlet holes (C) and attach wires to the quick connection. The connections are both non-polarity and non-position sensitive. Snap cover closed. If so desired, used supplied screw to more securely fasten cover to housing.

